

Arrival and Dismissal Locations at Summitt Elementary

Arrival Procedures

Beginning the 2nd day of School

Dismissal Procedures beginning Day 1

The First Day of School:

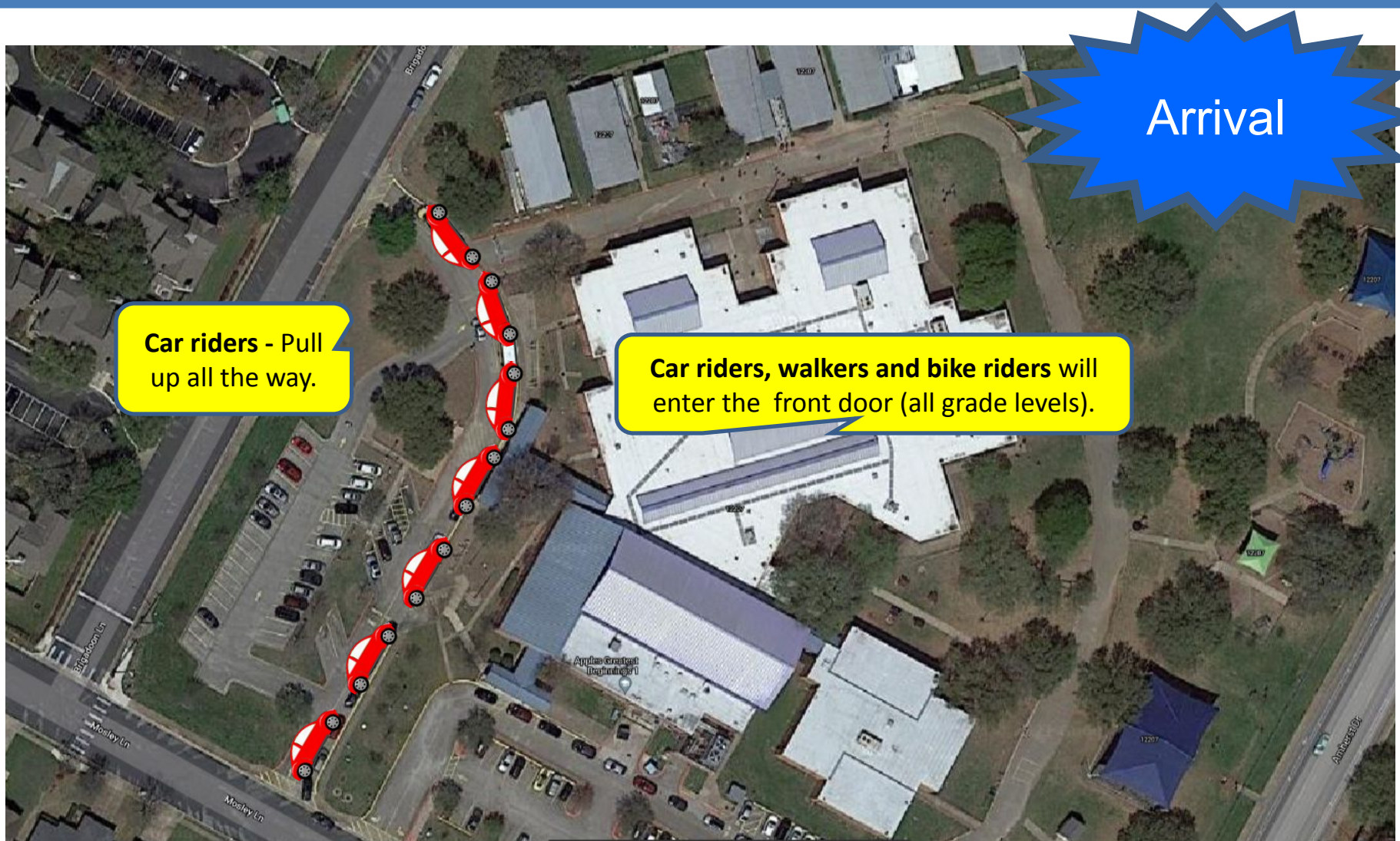
You can drop your child off in the car line or walk your student to their classroom on the first day of school only. A separate map will be provided.

Doors open at 7:15 am
Morning Assembly begins at
7:30am

Tardy Bell Rings at 7:40am

Dismissal is at 3:10pm

Traffic Patterns – Front Drive facing Brigadoon Car Riders, Walkers & Bike Riders

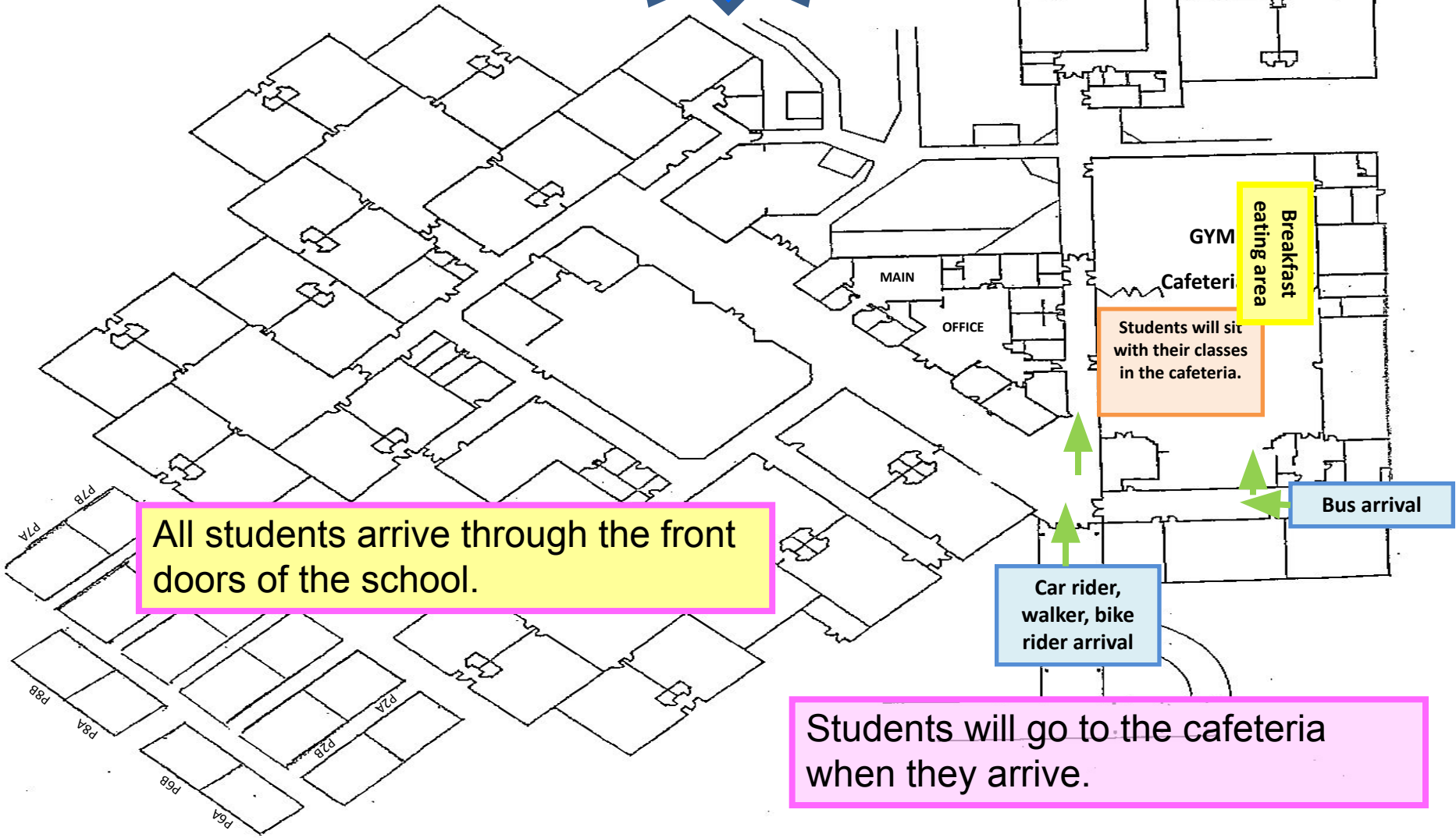


Arrival

Car riders - Pull up all the way.

Car riders, walkers and bike riders will enter the front door (all grade levels).

**Summitt Elementary
Student Arrival
Designated Locations
(7:10 am -7:30 am)**



All students arrive through the front doors of the school.

Breakfast eating area

Students will sit with their classes in the cafeteria.

Car rider, walker, bike rider arrival

Bus arrival

Students will go to the cafeteria when they arrive.

Dismissal

How will your child get home?



Car Rider



Bike Rider



Parent Walk-up (Pk-2nd)



Independent Student Walker



After School Program



Bus Rider



Dismissal

Traffic Patterns

Where do I pick up my child?

Car Riders

- One line
- Pick up in front of school
- Family number is displayed on the front dash

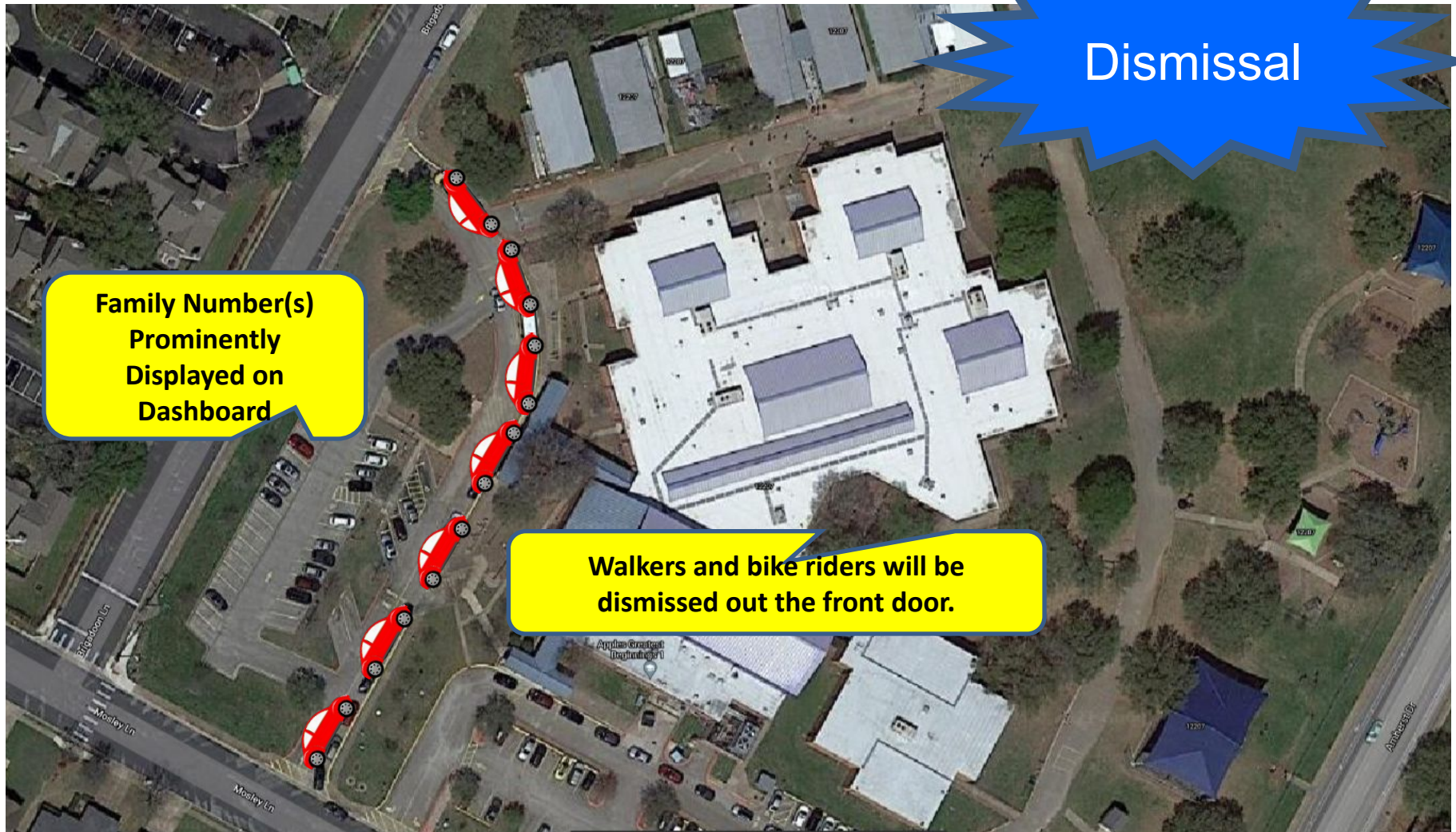


Dismissal

Walk-ups

- Your teacher can confirm your child's pick up location.
- Family number held up so that the teacher can match you to your child.

Traffic Patterns – Front Drive facing Brigadoon Car Rider Pick-up



Dismissal

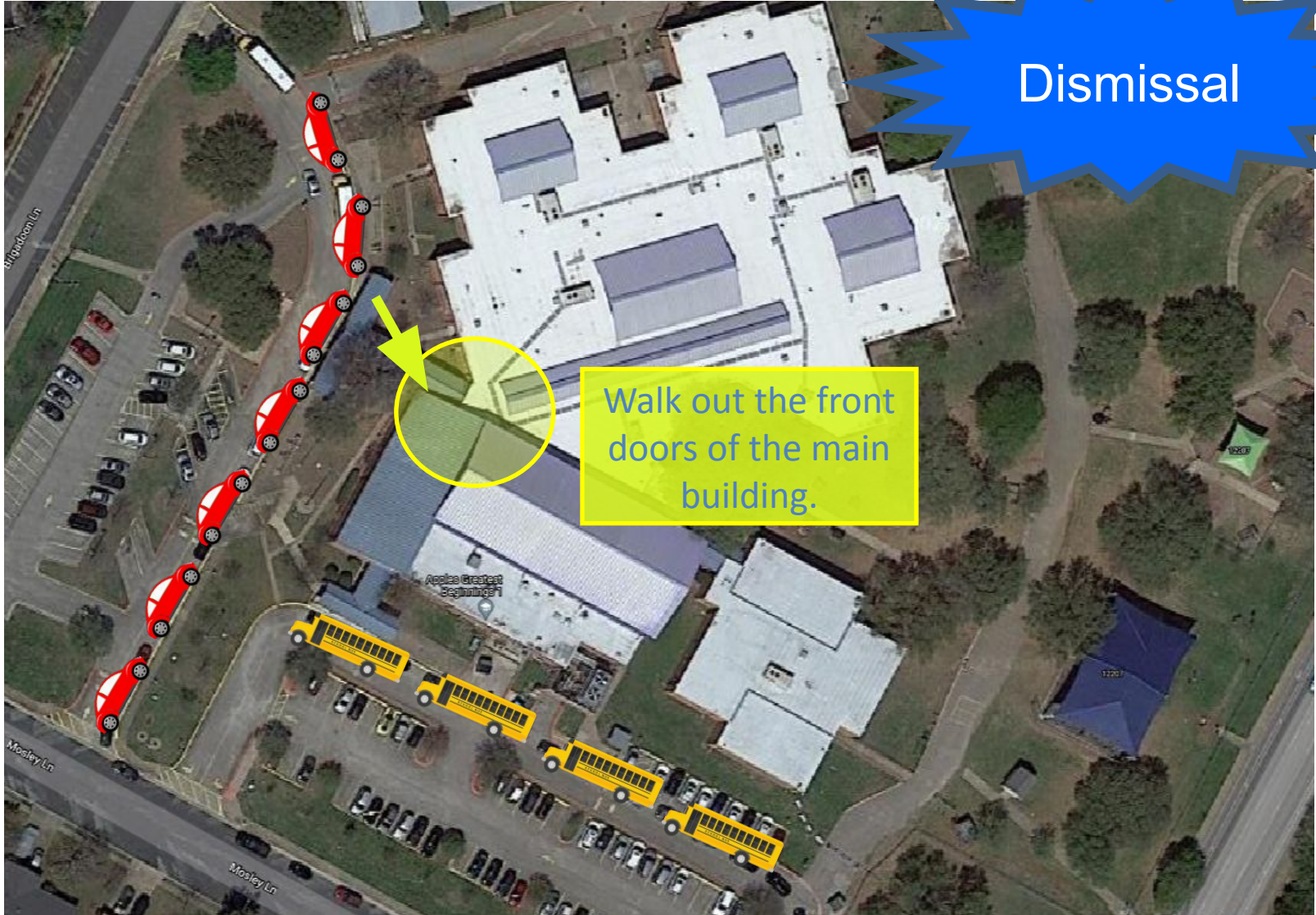
**Family Number(s)
Prominently
Displayed on
Dashboard**

**Walkers and bike riders will be
dismissed out the front door.**

Traffic Patterns – 5th Grade Independent Walkers

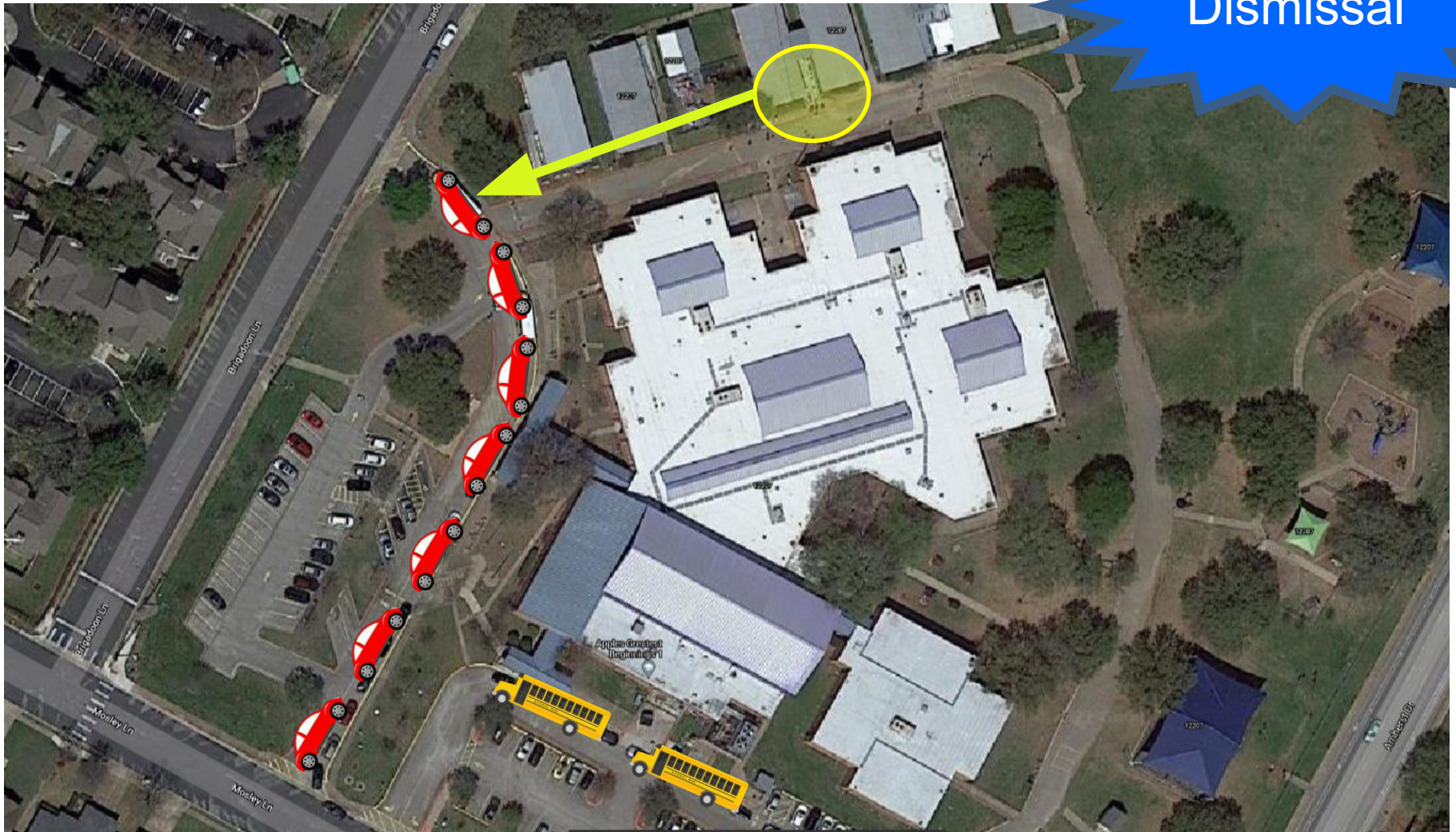
Dismissal

Walk out the front doors of the main building.



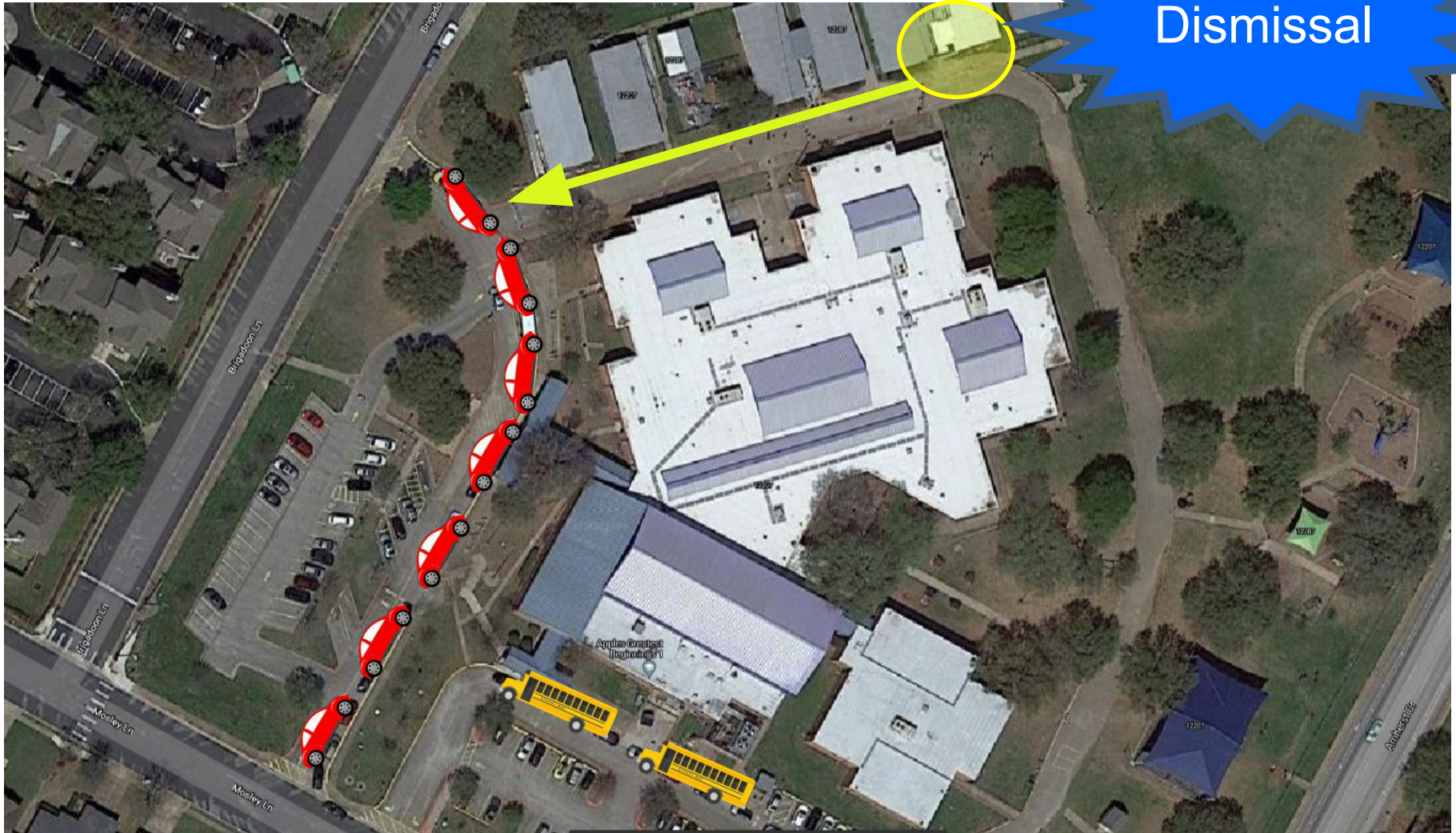
Traffic Patterns – 4th Grade Independent Walkers

Dismissal



Traffic Patterns – 3rd Grade Independent Walkers

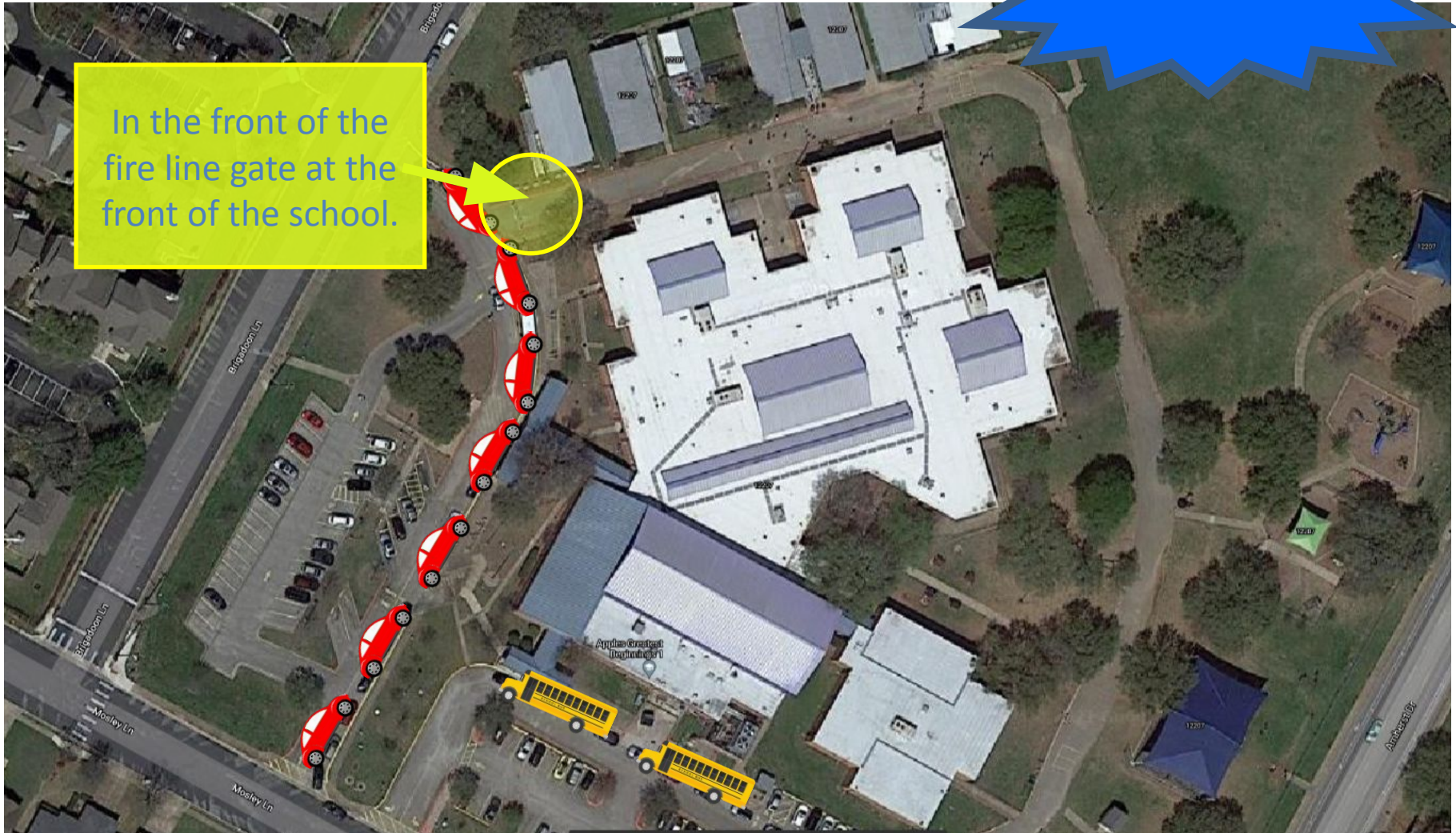
Dismissal



Traffic Patterns – 2nd Grade Parent Walk-ups

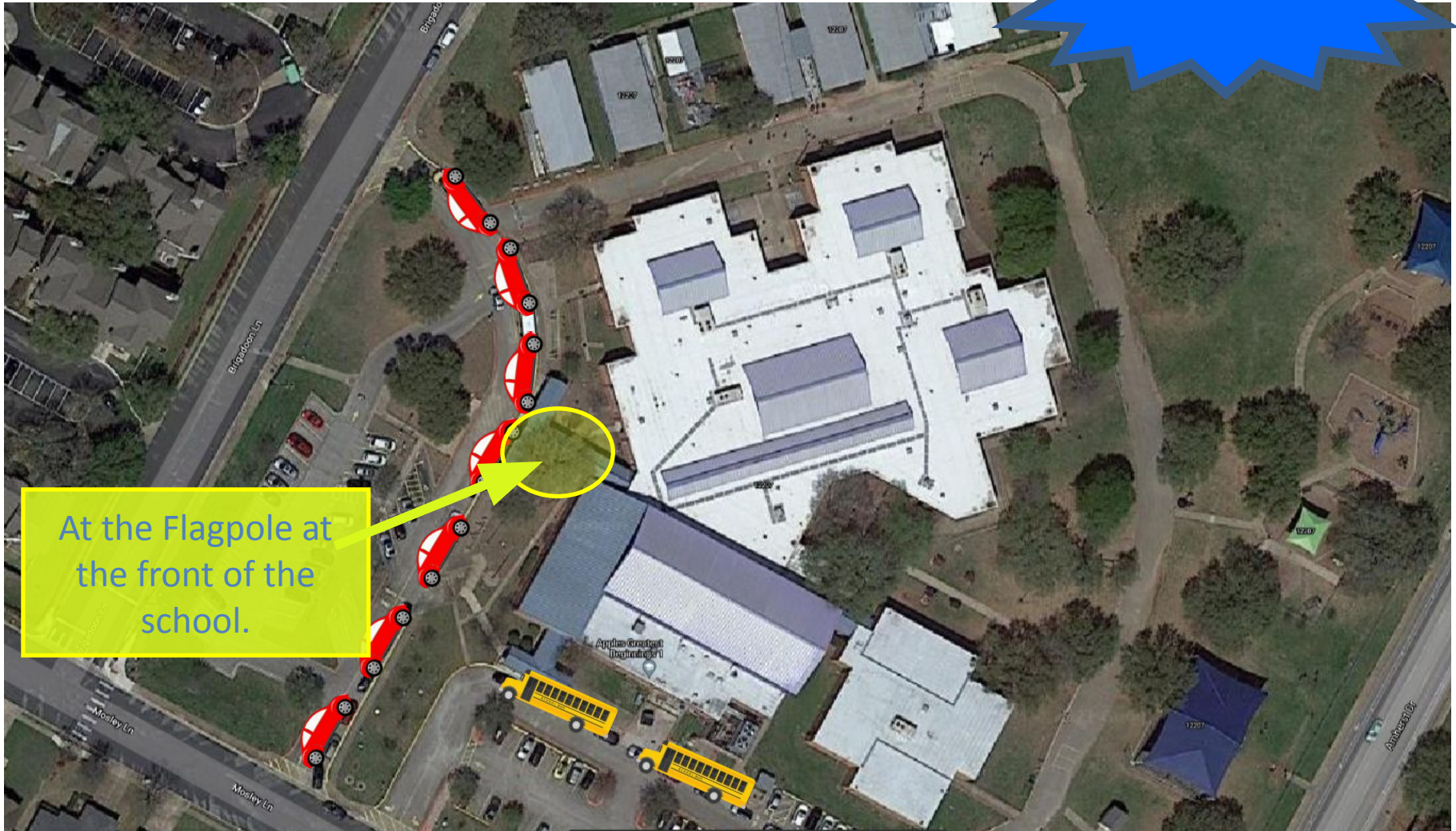
Dismissal

In the front of the
fire line gate at the
front of the school.



Traffic Patterns – 1st Grade Parent Walk-ups

Dismissal

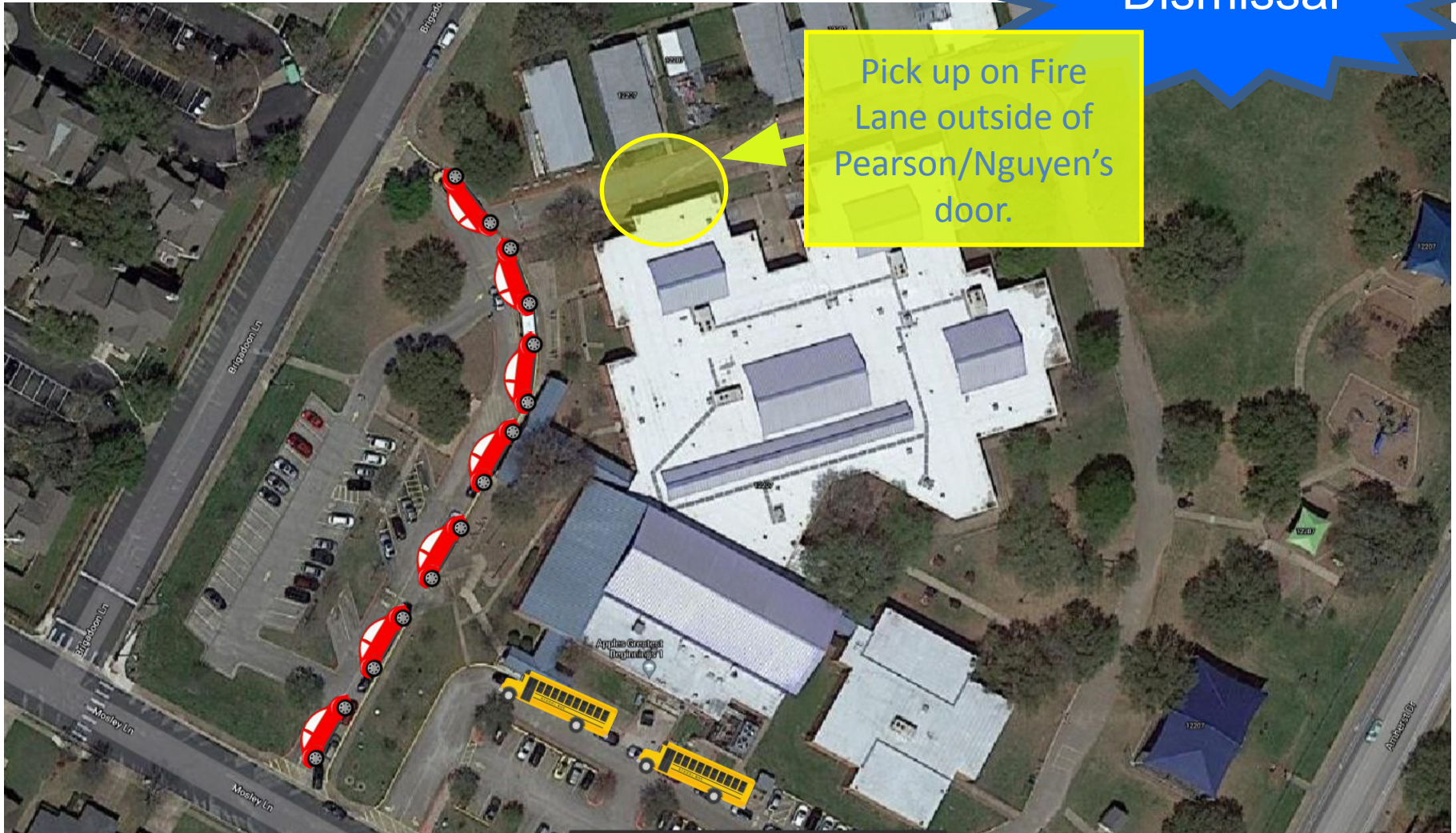


At the Flagpole at
the front of the
school.

Traffic Patterns – Kindergarten Parent Walk-ups

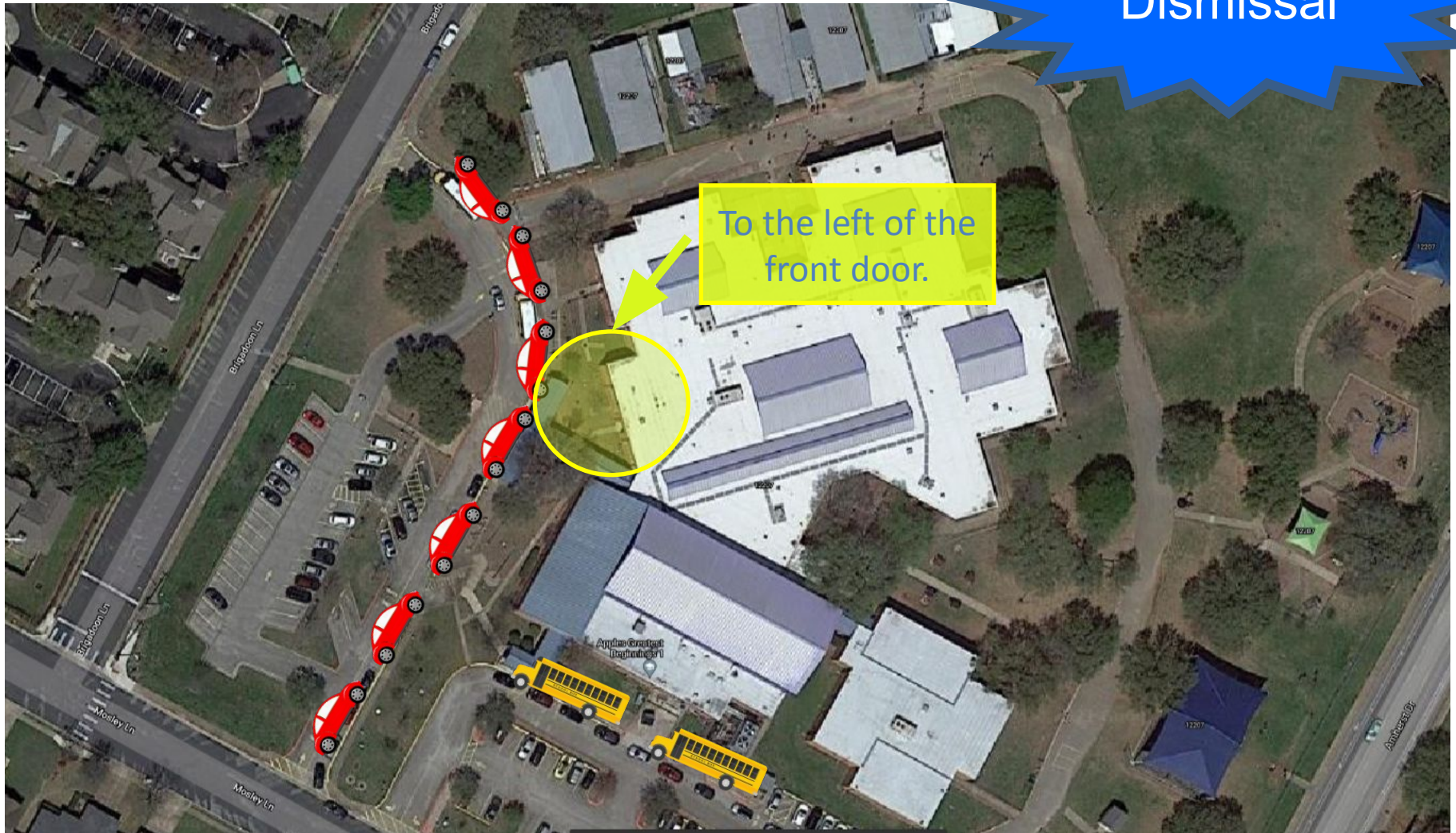
Dismissal

Pick up on Fire Lane outside of Pearson/Nguyen's door.



Traffic Patterns – Pre-K Parent Walk-ups

Dismissal



Traffic Patterns – Side Drive (facing Mosley) Buses and After Care Pickup

